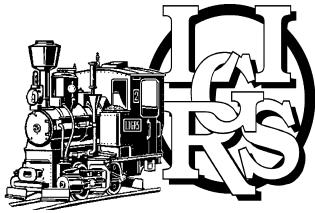




Monthly Meeting Sunday, March 15, 2009



Northport Yacht Club - 11:00 a.m. - 3:00 p.m.



With spring just around the corner, our thoughts focus on the rays of sunshine that bring the transition from winter's dormancy to spring's resurgence. The LIGRS is pleased to have Walter Traeg present a clinic on Building a Track Cleaning Car at our March meeting as a way to kickoff the 2009 Train Year. So come on down to the meeting and share the joys of a new year of garden railroading.

Smoke n' Cinders

The LIGRS auction meeting is undoubtedly the most popular club event of the year as it traditionally has had the largest attendance of any club meeting over the years. The auction provides an opportunity for members to acquire as well as dispose of various train related items and greenbacks. But the best part is the banter between the members and the auctioneer and each other as the bidding progresses. But none of this can happen without the participation of members who generously volunteer to fill the various roles necessary. Special thanks are in order to Bob Russo and Red Morgan who shared the demanding role of auctioneer with enthusiasm and capability. Likewise, Tom



Rizzo and Pete Conte functioned as "Vannas" displaying auction items for bidders to examine. Steve Gaherty assisted with the logging in of auction results. Behind the scenes, Rich McGorty assisted with logging in of the items to be auctioned. (Do you think he had an ulterior motive?) and

Don Corie who manned the tables, retrieving claimed auction items after they were paid for.

Thank you to the bidders as well as anyone we may have missed who helped make the auction an annual success. All in all the auction demonstrates what can be done when club members step in and work together as a team for the benefit of the membership.

See you next year!

Inside this issue:

View from the Cab	3
Organically Speaking	4
From the Recording Secretary	5
Member Profiles	6

Special points of interest:

- Photo Contest
- Member Profile





Smoke N' Cinders, the newsletter of The Long Island Garden Railway Society, Inc. is published approx. 11 times/year. The views & opinions expressed are those of the editor and columnists, and not necessarily those of LIGRS. Material published in *Smoke N' Cinders* may only be reproduced in other garden railway society newsletters and by other such non profit organizations if credit is given both to the author and *Smoke N' Cinders*, and a copy of the publication in which the material was used is mailed the editor of *Smoke N' Cinders* at P.O. Box 2002, No. Massapequa, NY 11758-2002. Otherwise, the use in whole or in part, of material published herein is prohibited and the material remains the property of LIGRS and the author.

Editor
 Louise Sewall
 (516) 541 4837
 louisesevall@verizon.net

Organically Speaking
 Bob Weschler
 (516) 785-1478

Web Master
 Trish Iannacone
 (516) 455-9259
 ohmscrabtree@yahoo.com

President ('09-'10)
 Ed Assaf
 (516) 783-5584 ebassaf@earthlink.net

Vice President ('08-09)
 Joe DiBenedetto
 516-804-2529
 Go4itjoed@aol.com

Treasurer ('09-'10)
 Bob Sewall
 (516) 541-4837
 trebor11758@verizon.net

Recording Secretary('09-'10)
 Karl Wagner (631)-584-6619
 sgauge@optonline.net

Membership Director & Corresponding Secretary ('09-'10)
 Tom Rizzo (631) 470-2217
 tomjudyriz@optonline.net

Program Director ('09-'10)
 Rich McGorty (516) 285-4710
 kegr@verizon.net

Dir.-At-Large ('08-'09)
 Pete Conte
 631-821-2975

Dir.-At-Large ('09-10)
 Dave Smith (516) 942-8689
 sunnyfield@aol.com

Dir.-At-Large ('08-'09)
 Rich Bishop (631) 475-5165
 rewindswept@verizon.net

Dir.-At-Large ('09-10)
 Danny Saporito (631) 587 7282
 danny.saporito@verizon.net

LIGRS STAFF

Good & Welfare Eileen Wagner (631) 584-6619

Module Coordinator John Oest (516) 796-7368

Quartermaster John Sakal (631) 724-6998

Video Librarian John Pizzulli (631) 549-8435

Club Merchandise Georgiana Gaherty sgforthill@verizon.net

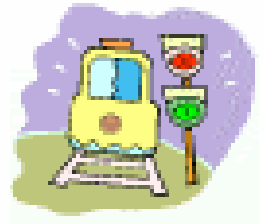
Coord

Club Contact:
 Tom Rizzo, 32 Semon Road, Huntington, NY 11743. Phone: 631.470.2217,
 tomjudyriz@optonline.net

LIGRS Meeting Schedule

Date	Program/Notes	Time	Place
April 2009	In lieu of Monthly Mtg	TBD	Planting Fields/Arbor Day
May 17, 2009	Monthly Meeting	11:00 AM	Patric Friedmann & Kris Bosworth
June 13, 2009	Garden RR Tours	TBD	Volunteer layouts
June, 2009 TBD	Monthly Meeting	TBD	Georgie & Steve Gaherty
July 19, 2009	Monthly Meeting	11:00 AM	Rick Padley
August 16, 2009	Monthly Meeting	11:00 AM	Paul Tobin
September 20, 2009	Monthly Meeting	11:00 AM	Mike & Kathleen Kmeth
October 18, 2009	Monthly Meeting	11:00 AM	Rich McGorty
November 15, 2009	Monthly Meeting	11:00 AM	Northport Yacht Club

View From The Cab



February's coming to an end and the Crocuses are right on schedule. It won't be long before outdoors by the railway will be more attractive than inside by the fire. I noticed the Crocus blooms for the first time while readying a short freight for a morning run.

Included in today's consist is my latest favorite on its maiden run. It left the auction with me as a nondescript covered two bay hopper along with the idea of me extensively weathering a car for the first time. Some paint, a few hours, and a bit of this and that has transformed the little freight car into a worn and rusted open coal hopper. This minor piece of modeling is the latest in a flurry of activity for me this New Year.

I'm on this train of thought not to blow my own horn but to talk about stretching the envelope. Model railroading and our branch of it in particular, holds a near endless variety of skills to acquire and develop. This recent journey began for me when I tentatively agreed to try and repair a locomotive for a wonderful friend who very thankfully had more confidence in my abilities than I did.

The loco needed a new pony truck as the original plastic one had broken. After going through my junk box to no avail and trying to purchase a workable replacement, the thought of fabricating a new one crossed my mind. I knew that brass was the best solution but had never worked with it before except for the odd bit of home plumbing. So soldering a brass truck it was. After scribbling some design thoughts and a not so daunting amount of trial and error a seemingly serviceable replacement emerged. And out in the garden it ran like a charm.

With this success under my belt I then made (using various techniques) a few detail pieces that were missing from this fine bashed loco-

tive. I then changed gears and began working on the long thought of, but never before started, Z scale garden railway for our club module display. Having never before worked with foam or indoor model railroading techniques I am encouraged by early test work.

So, now back to the beat-up little coal hopper trundling down the line. Watching closely for any problems on its first few turns around the pike I was struck by one of those ah-ha moments.

While never before had I done any of these tasks, I had been reading about them for years. All those hours spent with railroading magazines reading articles that didn't seemingly have any relevance to my kind of railroading has paid off - big time.

It appears that, when pushed into action, long gathered arm-chair knowledge can be transformed into satisfying results. So go ahead push yourself and enjoy the journey!

Last month's auction was great fun and as usual you-know-who was the prominent bidder but even so, many of us brought home unexpected treasures. Thanks to all the volunteers who helped make it a resounding success (you know who you are) and especially to our joint Golden Spike recipients Bob and Louise Sewall.

Don't forget to check out our Photo Contest rules that are now posted on the club website; can't wait to see those photos in Sn'C and on LIGRS.org this spring. And after you have read the rules take some time to look around the site, it looks great. Thanks to Trish Iannacone for getting it back up to speed.

April is just around the corner and so is the Arbor Day Festival at the Planting Fields. Set-up (Continued on page 7)



Here we go again, still another column about compost. I can hear my "Old Time" readers remarking, "He has run out of ideas for his column and now he is starting back from the beginning columns." However, please read on because this column has a new, at least to me, concept that I find fascinating. It is a fact that many gardeners do not wish to make a compost heap for many varied reasons. In that case, I have suggested using the method called sheet composting. In other words digging a hole or a trench and putting into it what would have gone onto a compost heap such as waste from the kitchen, grass clippings, and other garden refuse etc.

The information that I would like to share with you is from a book that I recently sent away for from the Rodale Press. It begins "A New Layering System for Bountiful Gardens: No Digging, No Tilling, No Weeding, No Kidding. The title is *Lasagna Gardening* by Patricia Lanza. This method requires much less work than sheet composting. It is a way to have the best soil with the least effort.

If you would like to make a new area for your vegetable garden, you can simply begin this method right over the existing sod or you can place it on the existing area. The actual size and shape of the new garden should be small to begin with. Approximately 4 by 8 feet would be a good beginning. After you have tried this new technique once, you can quickly create new lasagna gardens to expand your plantings.

With the approach of spring and getting to work doing your spring garden cleanup, you will have plenty of material for creating your new

lasagna garden. The material had all winter to break down so it should be nice and crumbly. Neighbors are a source of material instead of them putting it out at the curb for garbage pick up. If you end up not having enough mulch and compost materials, you will probably need to purchase some of your ingredients especially when you are just getting started. Sphagnum moss and peat moss are two of the most accessible and inexpensive materials available. If you have any compost, homemade or purchased they will help to speed up the breaking down process of the other materials.



Assembling a Lasagna Garden: For the first layer, use thick pads of wet newspapers and place them close together so the edges overlap slightly. This will keep weeds from sneaking through. Dip them in a tub of water or use a hose to soak them. Next, add a 2 to 3 inch layer of the sphagnum moss and peat moss. Now spread a 4 to 8 inch layer of organic wastes. Add another layer of sphagnum moss and peat moss and another layer of mulch, and so on, until the beds are 18 to 24 inches high. If you have a source for horse barn litter and/or spoiled hay, they will help the pile to "cook". If you wish, you can scatter some bone meal, wood ashes and limestone on top of the layers.

As with creating a compost heap, I intend to have a garden hose handy to wet the dry leaves and other dry material as I am creating the layers. I have been saving newspapers ever since I opened the book and am looking forward to warmer weather to create my first (Continued on next page)

Organically Speaking Cont.

lasagna garden. Once the bed is 18 to 24 inches deep, cover it with black plastic and weigh the edges with bricks or rocks. The plastic helps to keep the materials moist and traps the sun's warmth for fast heating. Leave the plastic on for about 6 weeks. Most of the mulch will have broken down into a dark, crumbly material that is a joy to plant in.

A lasagna garden that has "cooked" will be dark and loose, so you can set out plants just as you would in a traditional garden. The great thing about lasagna gardening is that you don't HAVE to wait to plant. You can build the gar-

den and plant in the same day. No digging is necessary. To make a planting hole in the new bed, simply cut a slit in the plastic, if you used plastic, pull layers apart with your gloved hands. Set the plant in the hole, pull the mulch back around the roots, and water it thoroughly.

If you don't do something, nothing is going to get better.

From the Plant Man

From the Recording Secretary

LONG ISLAND GARDEN RAILWAY SOCIETY

MINUTES OF THE GENERAL MEETING, FEBRUARY 15, 2009

President Ed Assaf asked that the meeting be opened @ 12:05 PM. A motion was made by Bob Russo and seconded by Danny Saporito to open the meeting at North Port Yacht Club. There were 43 members present.

Ed asked for a motion to accept the November minutes. A motion to accept the minutes was made by Tom Rizzo and seconded by Steve Borakowski. Approved

President Ed Assaf presented Louise and Bob Sewall each with a Golden spike award. This time it is a Golden Name Badge with their names on them. This was given to them for extra time and work they dedicated to the club.

Ed announced the Club Photo contest. The rules will be in Smoke n Cinders and also

posted on the LIGRS Web site.

Ed also announced a Garden tour. This is where we as club members open our layouts to Garden clubs who would come and visit. Please see Ed if you wish to be part of this. A tentative date is June 13 10 AM to 2 PM

The 50/50 winner was John Oest

Motion was by made to close the meeting by Steve Borakowski and seconded by Joe DiBenedetto. Meeting closed at 12:20 PM

Let the Auction begin.

Respectfully Submitted

Karl Wagner

Recording Secretary

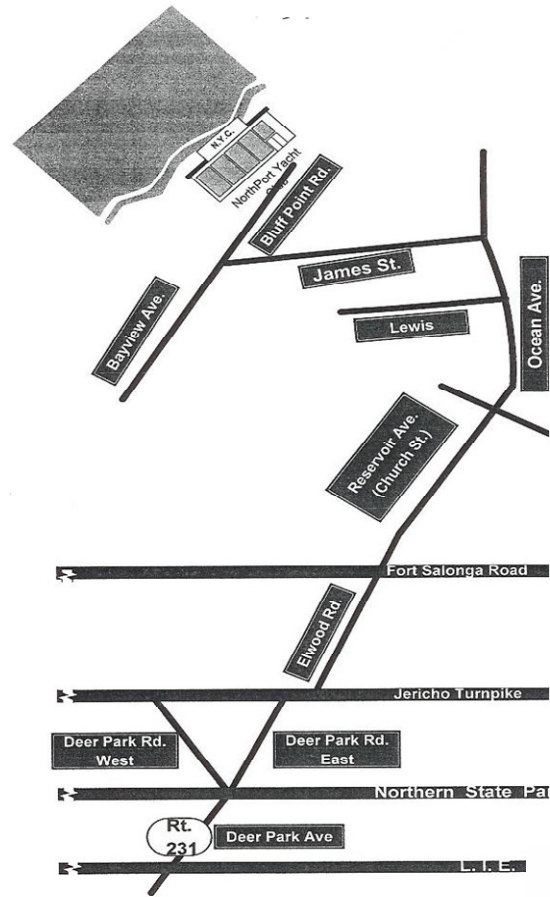


Directions to the Northport Yacht Club Monthly Meeting

Sunday, March 15, 2009 11:00-3:00

Turn by turn directions: Take the LIE or Northern State Parkway to Deer Park Ave (Rte. 231) north. Bear right onto Deer Park Road East. Merge onto Jericho Tpke. (Rte. 25) and make the next left onto Elwood Road. Elwood changes into Reservoir Road, then Church and finally into Ocean Ave. Make a left on James Street and follow to Bluff Point Road and make a right. Northport Yacht Club is on the left.

631-261-7633



Member Profiles



Trish Iannacone is our webmaster. She has been a member of the club for many years. When it was decided that we needed a website, Trish volunteered to be our web-

master. Our very first LIGRS website was really something to be proud of. Trish designed all of the pages and posted many photos of members' layouts. In addition she solicited photos from members of their Christmas layouts.

When our website host discontinued supporting the software that she was using she needed to totally recreate our site using dif-

ferent software. The new site is rapidly taking shape as she adds more and more photos and up-to-date club information.

Trish is also a former editor of Smoke n' Cinders. She is the one responsible for using Microsoft Publisher to create the attractive style of the newsletter that we use today. Her creativity in finding just the right train related clip art and sayings made her "a hard act to follow." She stayed up many a long night trying to get the newsletter "to the press" in time for distribution each month.



From the Cab Cont.

will be on Friday April 24th. The Festival runs on Saturday the 25th and Sunday the 26th, with breakdown of the display at the end of the day on Sunday. Don't forget to sign up as a volunteer at the March meeting. Set-up can be a great learning experience for those of you who need a push to get started on building your own garden empire so come out and enjoy.

As I announced at the February meeting and mentioned in my last column we will be hosting a garden railway tour day on Saturday June 13th from 10am to 2pm. The tour will be open to

members of several Long Island garden clubs. Time is running short to get all of the logistics straight and publicize the event with the invited clubs. So, if you are interested in opening your railway to folks who love gardens please contact me as soon as possible. With a bit of effort we can make this a great bit of discovery for them and maybe learn something from all of those visiting green thumbs as a bonus.

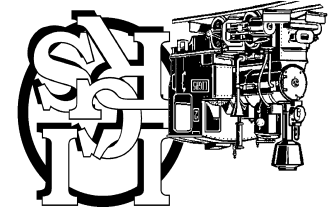
Hope to see all of you at the March meeting.

Ed Assaf

Long Island Garden Railway Society Photo Contest

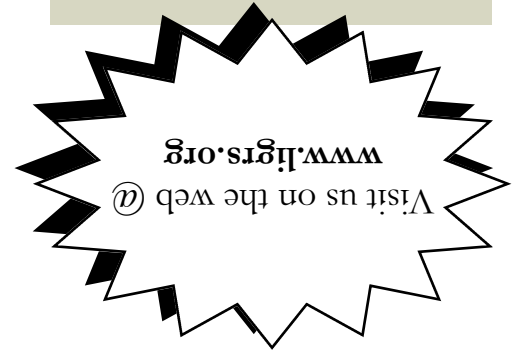
1. Photos must be of a member's railway.
2. Photos must be taken by club members or their immediate family.
3. Each member is limited to one photo in any month.
4. Each month the best photo will be published in Smoke and Cinders. Non winning photos may be resubmitted by the photographer in subsequent months.
5. To determine the annual winner the best monthly photos will be judged as a group by the attendees of the LIGRS Christmas Party.
6. The annual winner will be published in the February Smoke and Cinders and the photographer will receive two free adult admissions to the next LIGRS club picnic
7. Every photo must be accompanied by the photographers name, the railway owners name and the name of the railway if any.
8. Submit all photos to Danny Saporito. E-mail digital photos to danny.saporito@verizon.net. Mail Prints to 104 Sheffield Avenue, West Babylon, NY 11704.
9. Identities of contestants will be concealed from the judges until after the winners have been chosen.
10. Photos will be judged by Kris Bosworth and Patric Friedmann.
11. Any photo that does not adhere to all of the above rules will be ineligible to enter the contest. The decision of the judges is final
12. LIGRS reserves the rights to retain any entry for possible future publication.

Advertising Policy
 Advertisement shall in no way be construed as an endorsement of any product, manufacturer, product or reseller by The Long Island Garden Railway Society. Commercial Ads or Ads from Non-members for large scale or garden railway products are at a rate of \$35.00/ full page, or \$20.00/half page/issue and basically reimburses The club Treasury for postage expense. Artwork is The responsibility of The advertiser. Ads from Members for large scale or garden railway items are accepted at no charge and will run once. Ads may be repeated at The advertisers request, space permitting. Ads should be submitted by e-mail to the editor. The deadline for ads will be The meeting prior to the next issue.



Newsletter of the Long Island Garden Railway Society

Smoke N' Cinders at P.O. Box 2002, No. Massapequa, NY 11758-2002



Erin Go Bragh!

